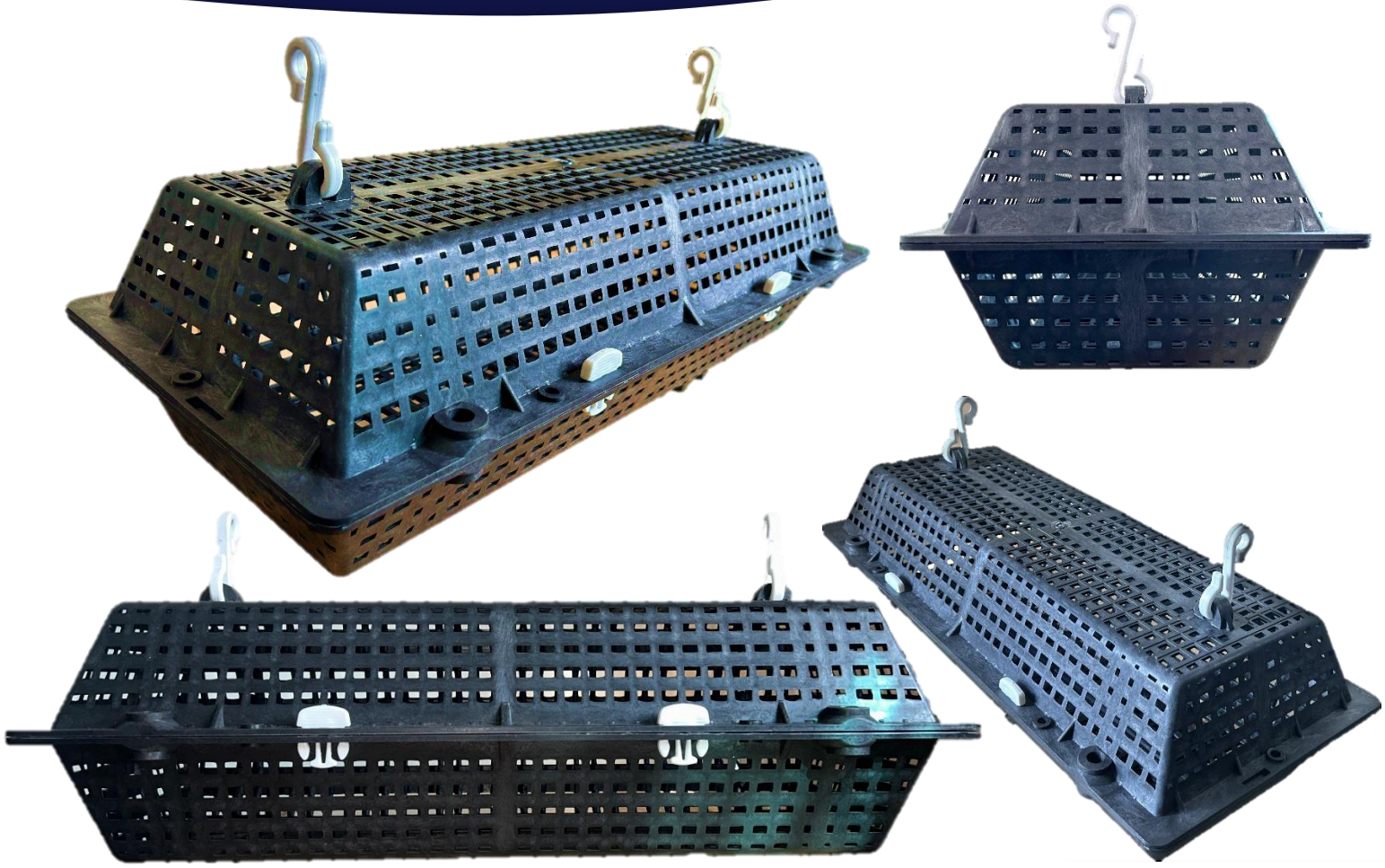


# Oyster Farming Box

The Next Generation of Oyster Farming System



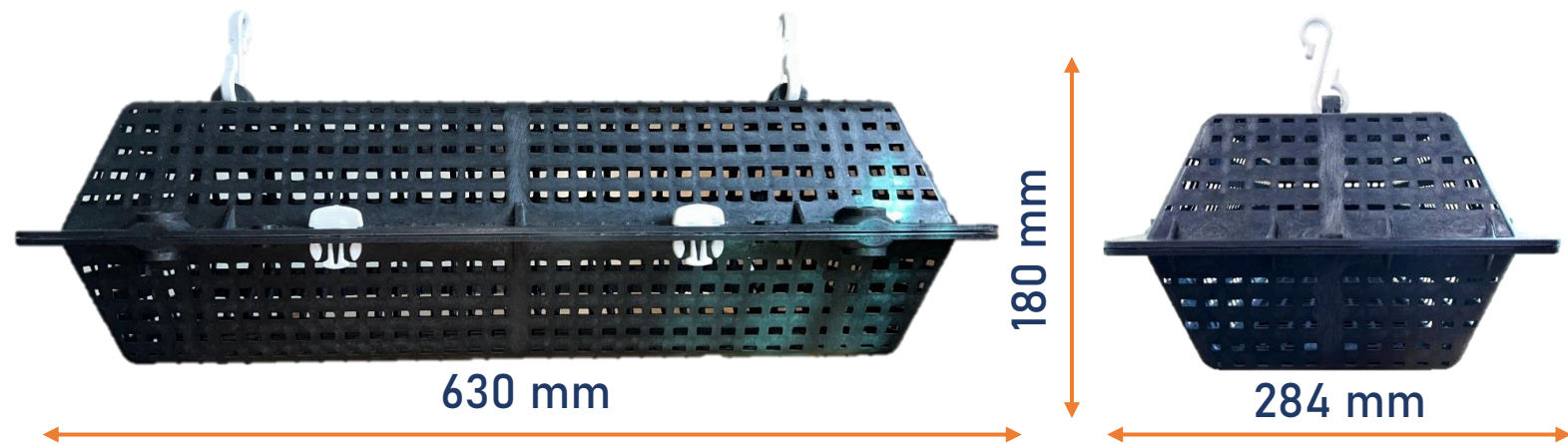
## Description

RD ENTERPRISE Introduce adjustable longline Oyster farming technology for Oyster farmers In India.

The product is Extremely durable and easily stackable for storage, this premium oyster farming equipment is a top choice for commercial aquaculture growers.

Oyster Boxes improve farming efficiency while growing a higher quality product are helping an Indian oysters Farmers to penetrate international markets. Looking to improve productivity, we designed the hexagonal type oyster boxes. The design delivers up to 40% increase in productivity, improved stock quality and reduced operating costs. The oyster boxes accommodate a wide range of mesh sizes and multiple orientations for both high and low

## Specifications & Dimensions



## Features & Benefits

- Quick assemble
- Suits all sizes required for Oyster growth
- Large **22-liter** baskets
- Multiple attachment options
- Impact resistant in Hot & cold climates
- 10 Year average service life (under normal use)
- Suits Oysters, Scallops, Sea Urchin, mussels
- Greater stock density = reduced operating cost
- Larger flat 'footprint' = 40% improved productivity
- Each basket handles up to **7-8 kg** of stock
- Locks when located in the upright operating position
- Light weight & Cost effective

|                         | Description        |
|-------------------------|--------------------|
| Material                | PP                 |
| Capacity in litter      | 22                 |
| Weight (appx.)          | 1.5 kg             |
| Stocking capacity in KG | 7-8 KG             |
| Oyster Socking Size     | 5mm to 45 mm       |
| Colour options          | Black, Blue, Green |

## Different Components



Side wall Mesh



Locking Clip



Hanger Clip

## Types of Mesh we suggest according to Oysters Size



### Juvenile Oyster Mesh

We supply the oyster seeding mesh, 2 mm to 5 mm gauge size for baby oysters or juveniles mesh size with 100% new HDPE material.

### The Mesh size

Initially available in a 12-16 mm mesh making this Box suitable for finishing oysters from 1 inch and up.

## Different way of Oyster Farming in Box system

- Adjustable Longline System,
- Subtidal System
- Fixed System
- Subtidal Floating System



Stocking  
Density  
As per  
Mesh Size

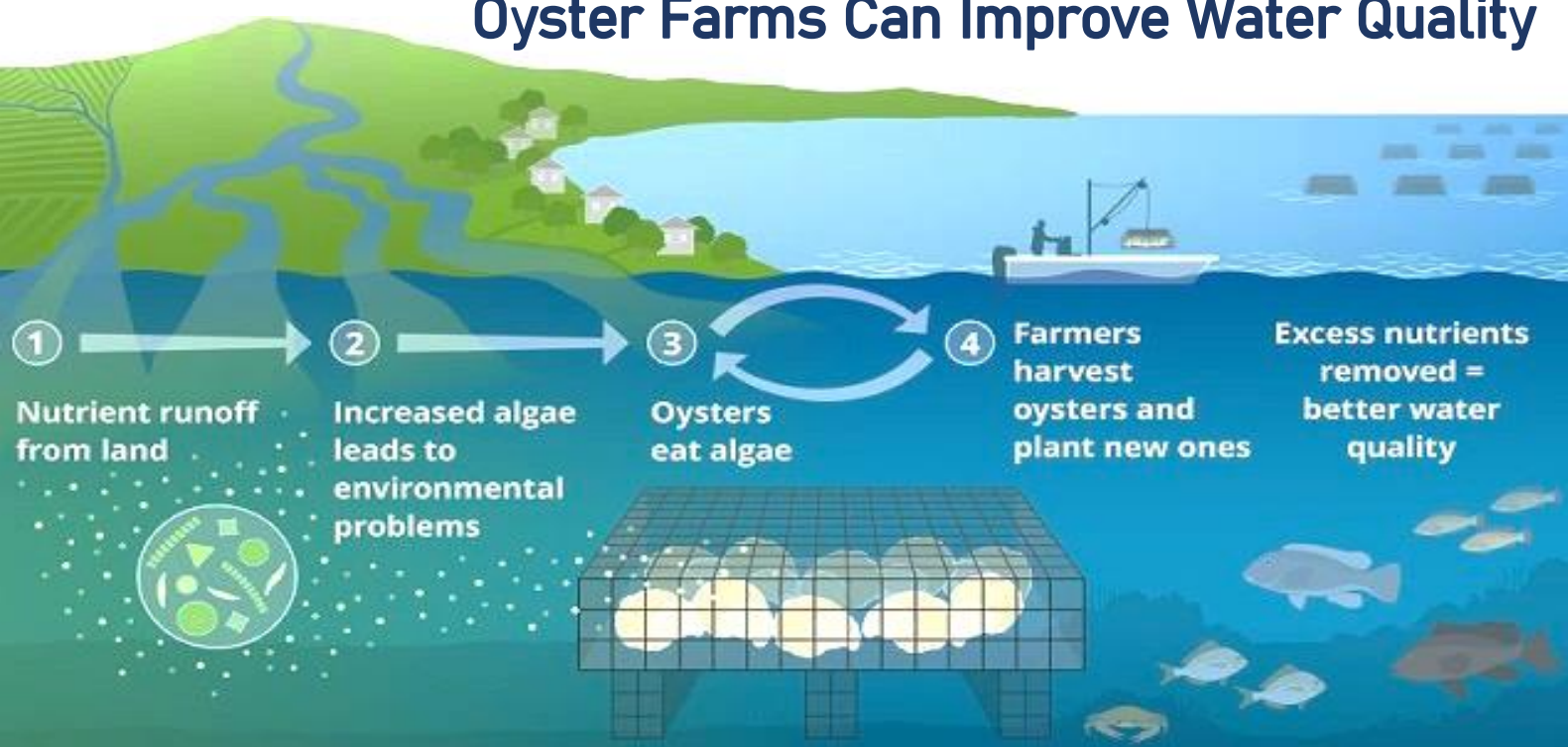
| Mesh Size | Numbers of Oysters | Oyster starting Size (appx.) |
|-----------|--------------------|------------------------------|
| 3 mm      | 5000-6000 Oyster   | 6 mm                         |
| 5 mm      | 800-1000 Oyster    | 10 mm                        |
| 12 mm     | 400-500 Oysters    | 20 mm                        |
| 16 mm     | 150-200 Oysters    | 30 mm +                      |



Another rule for the 10mm, 15mm and 20mm mesh baskets is to fill the oysters to approx one-quarter full and grade them once the basket is half full.

(Stocking densities are specific to site and species)

## Oyster Farms Can Improve Water Quality



# RD ENTERPRISE



MECHANICAL ENGINEERING WORKS AND DEAL WITH ADVANCE AQUACULTURE EQUIPMENTS

✉ rdenterprise1314@gmail.com

☎ +91 82005 03077

GSTIN: 24CDWPP7071H1ZX

Address: 165, Happy Green Signature Soppers, Opp. The legend, Vesu, VIP Road - Surat, Gujarat, pin code - 395007

